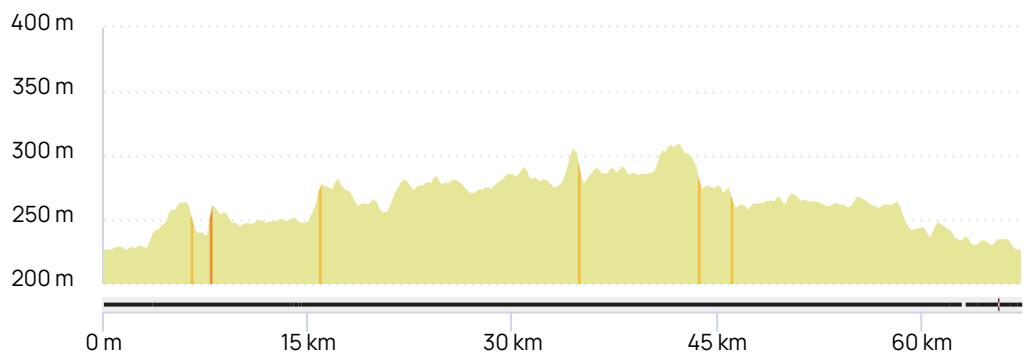
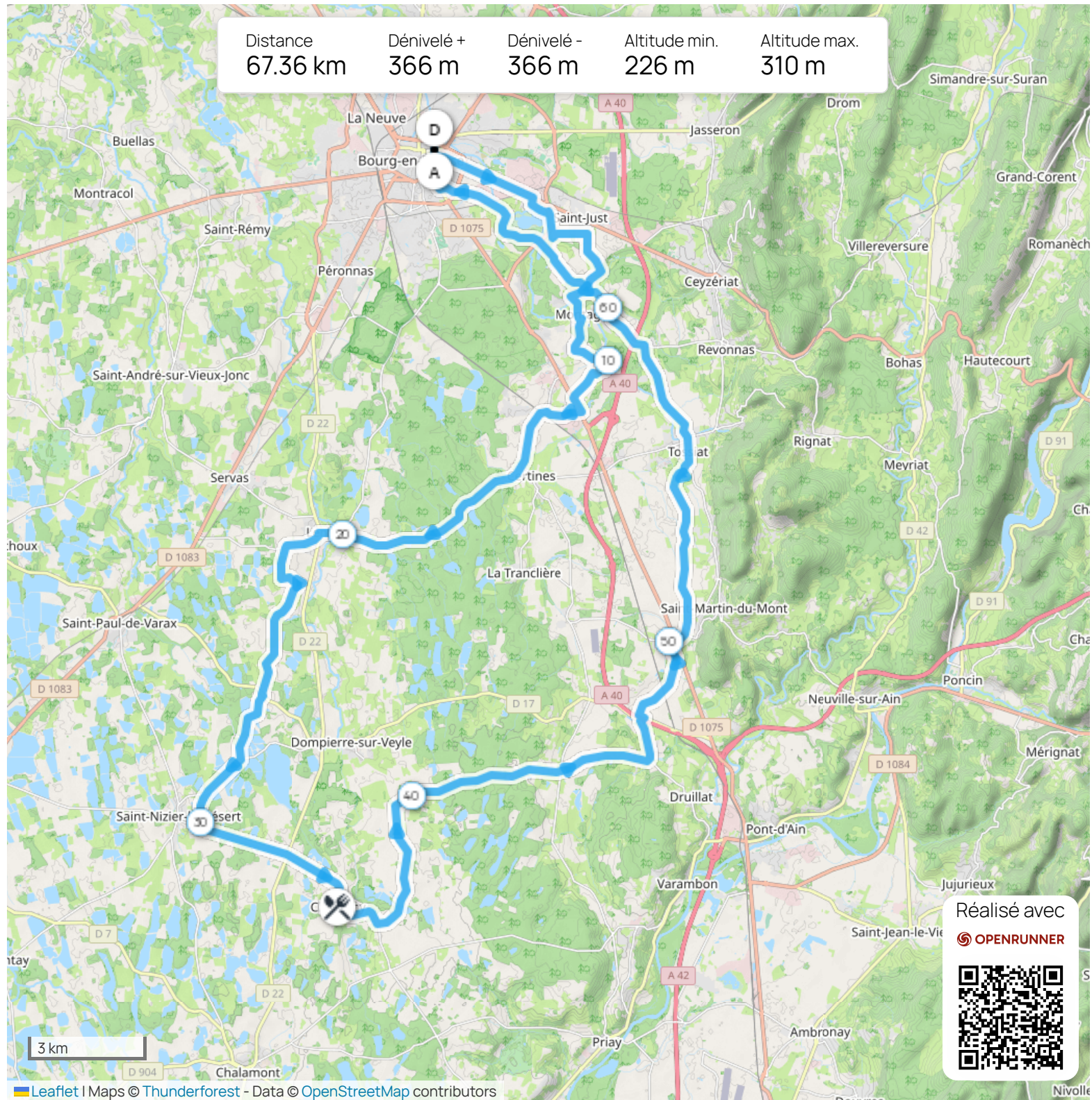
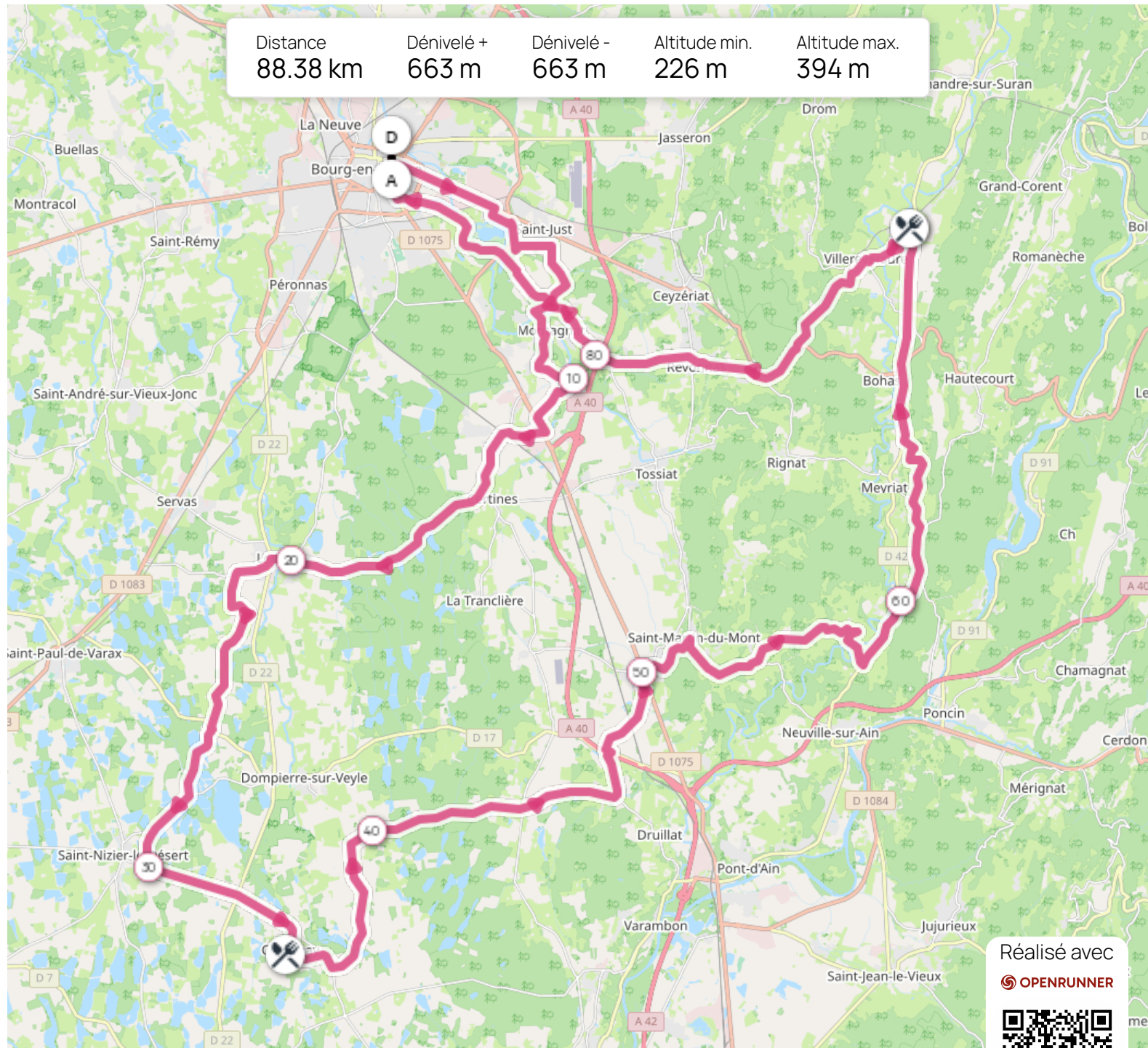


Distance	Dénivelé +	Dénivelé -	Altitude min.	Altitude max.
67.36 km	366 m	366 m	226 m	310 m



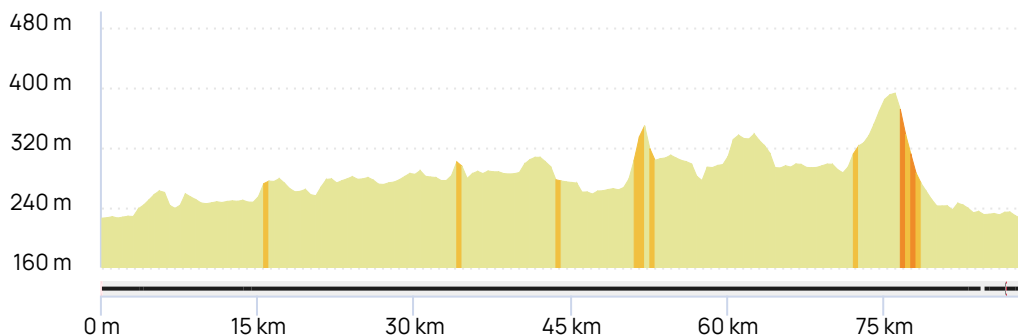
Distance 88.38 km Dénivelé + 663 m Dénivelé - 663 m Altitude min. 226 m Altitude max. 394 m



Réalisé avec



Leaflet | Maps © Thunderforest - Data © OpenStreetMap contributors



Distance	Dénivelé +	Dénivelé -	Altitude min.	Altitude max.
98.72 km	959 m	959 m	226 m	587 m

